

BILL OF MATERIAL (CARBON STEEL)					
NO.	NAME OF PART	QTY.	MATERIAL	PART NO.	SPECIFICATION
8	CHAMBER: WELD PAD	1	CARBON STEEL	V3 ## 0.000 A40	A36
2	GASKET: SEAL	1 PER SECT.	IFG5500	V18980 #	
3	GLASS: REFLEX	1 PER SECT.	BOROSILICATE	V16757 #	
4	GASKET: CUSHION	1 PER SECT.	IFG5500	V18980 #	
4	COVER	1 PER SECT.	CARBON STEEL	V22505 # A11	SA36
7	BOLT	SEE CHART	CARBON STEEL	X172479	B18.2.1
6	WASHER	2	304SS	V13936 R	
5	TAG: RATING	1	304SS	V21864	

BILL OF MATERIAL (316SS PIC)					
NO.	NAME OF PART	QTY.	MATERIAL	PART NO.	SPECIFICATION
1	CHAMBER: WELD PAD	1	316/316LSS	V3 ## 0.000 TL2	ASTM 276 & ASME SA479
2	GASKET: SEAL	1 PER SECT.	IFG5500	V18980 #	
3	GLASS: REFLEX	1 PER SECT.	BOROSILICATE	V16757 #	
4	GASKET: CUSHION	1 PER SECT.	IFG5500	V18980 #	
5	COVER	1 PER SECT.	CARBON STEEL	V22505 # A11	SA36
6	BOLT	SEE CHART	CARBON STEEL	X172479	B18.2.1
7	WASHER	2	304SS	V13936 R	
8	TAG: RATING	1	304SS	V21864	

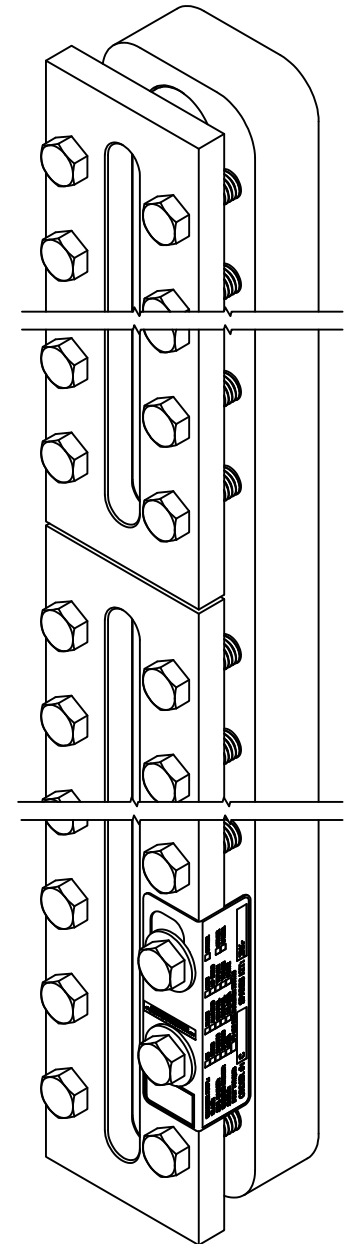
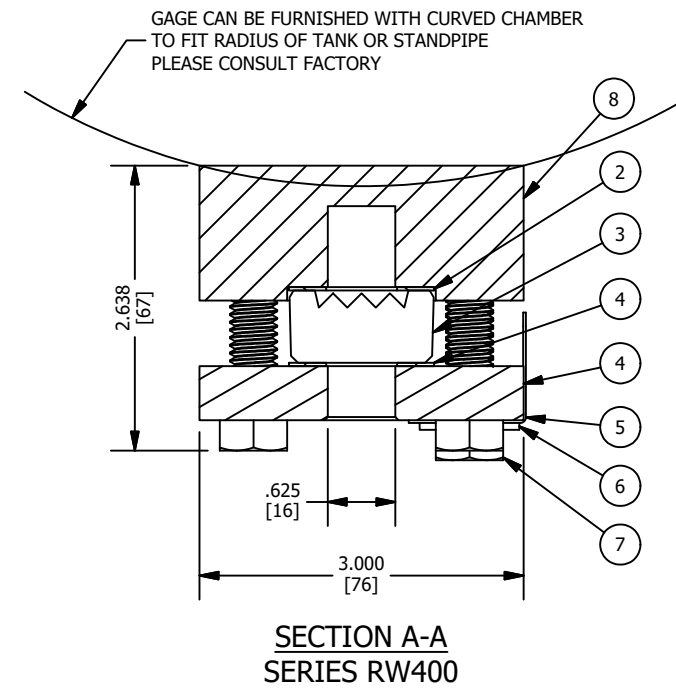
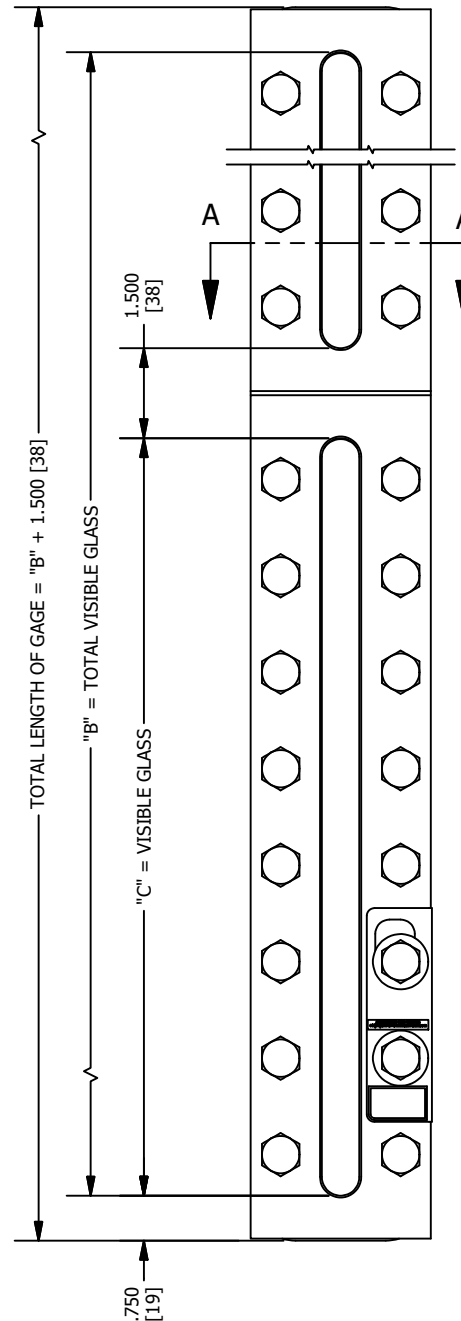
BILL OF MATERIAL (ALL 316SS)					
NO.	NAME OF PART	QTY.	MATERIAL	PART NO.	SPECIFICATION
1	CHAMBER: WELD PAD	1	316/316LSS	V3 ## 0.000 TL2	ASTM 276 & ASME SA479
2	GASKET: SEAL	1 PER SECT.	IFG5500	V18980 #	
3	GLASS: REFLEX	1 PER SECT.	BOROSILICATE	V16757 #	
4	GASKET: CUSHION	1 PER SECT.	IFG5500	V18980 #	
5	COVER	1 PER SECT.	316/316LSS	V22505 # TL10	SA479
6	BOLT	SEE CHART	316SS	X172603	B18.2.1
7	WASHER	2	304SS	V13936 R	
8	TAG: RATING	1	304SS	V21864	

NOTES:

- DIMENSIONS IN INCHES W/ mm EQUIVALENTS IN BRACKETS.
- REFER TO THE FOLLOWING (FOR):
 - CATALOG BULLETIN J100.37 (FULL RATINGS & ADDITIONAL INFORMATION).
 - IOM BULLETIN J500.11 (INSTRUCTIONS).
 - SEE PRICE SHEET BULLETINS FOR AVAILABLE OPTIONS.
- "#" IN PART NUMBER INDICATES SIZE AND/OR NUMBER OF SECTIONS.
- CONSULT FACTORY FOR ALTERNATE MATERIAL OPTIONS.

TEMPERATURE/ PRESSURE RATING:

CARBON STEEL: MIN TEMPERATURE -20°F, MIN PRESSURE 0 PSI
MAX TEMPERATURE 400°F, MAX PRESSURE 400 PSI
STAINLESS STEEL: MIN TEMPERATURE -320°F, MIN PRESSURE 0 PSI
MAX TEMPERATURE 400°F, MAX PRESSURE 400 PSI



SIZE NO.	QTY. PER SECT.	DIM. "C"	NUMBER OF SECTIONS			
			DIMENSION "B"			
			1	2	3	4
1	6	3.750 [95]	3.750 [95]	9.000 [229]	14.250 [362]	19.500 [495]
2	6	4.750 [121]	4.750 [121]	11.000 [279]	17.250 [438]	23.500 [597]
3	8	5.750 [146]	5.750 [146]	13.000 [330]	20.250 [514]	27.500 [699]
4	10	6.750 [171]	6.750 [171]	15.000 [381]	23.250 [591]	31.500 [800]
5	10	7.875 [200]	7.875 [200]	17.250 [438]	26.625 [676]	36.000 [914]
6	12	9.125 [232]	9.125 [232]	19.750 [502]	30.375 [772]	41.000 [1041]
7	14	10.250 [260]	10.250 [260]	22.000 [559]	33.750 [857]	45.500 [1156]
8	16	11.875 [302]	11.875 [302]	25.250 [641]	38.625 [981]	52.000 [1321]
9	16	12.625 [321]	12.625 [321]	26.750 [679]	40.875 [1038]	55.000 [1397]

REV	DATE	REVISION	BY
5	12/17/2020	UPDATED CHAMBER PART NUMBERS FROM V22639 ## ## TO V3 ## .### ##	SH
4	6/2/2020	UPDATED BALLONS IN SECTION A-A	SH
3	5/19/2020	ADDED TEMPERATURE/ PRESSURE RATINGS	SH
2	4/3/2020	UPDATED SPECIFICATION FOR 316SS CHAMBERS. ADDED TOTAL LENGTH DIMENSION	SH

MANUFACTURED BY

16633 FOLTZ PARKWAY
STRONGSVILLE, OH 44149 USA
(440) 572-1500 | www.clarkreliance.com
© Clark-Reliance® Corporation. All Rights Reserved.

JERGUSON®
SERIES RW400 WELD PAD GAGE

PART NUMBER: A35803 ## ##	
TOLERANCE CLASS (PER PES-004): N/A	
MATERIAL: SEE BOM	
REVISION: 5 PER CDC 20-610: SH: 12/17/2020	
DRAWN: SH	DRAWING NO.: RW400
CHECKED: SRM	REV.: 5
DATE: 07/23/2019	