

BILL OF MATERIAL (CARBON STEEL)					
NO.	NAME OF PART	QTY.	MATERIAL	PART NO.	SPECIFICATION
1	CHAMBER, WELD PAD	1	CARBON STEEL	V3 ## #.### A40	ASTM A36
2	GASKET, SEAL	1 PER SECT.	IFG5500	V18980 #	
3	GLASS, REFLEX	1 PER SECT.	BOROSILICATE	V16757 #	
4	GASKET, CUSHION	1 PER SECT.	IFG5500	V18980 #	
5	COVER	1 PER SECT.	CARBON STEEL	V22505 # A11	ASME SA36
6	BOLT	SEE CHART	CARBON STEEL	X172479	B18.2.1
7	WASHER	2	304SS	V13936 R	
8	TAG, RATING	1	304SS	V21864	

BILL OF MATERIAL (316SS PIC)					
NO.	NAME OF PART	QTY.	MATERIAL	PART NO.	SPECIFICATION
1	CHAMBER, WELD PAD	1	316/316LSS	V3 ## #.### TL2	ASTM A276 & SA479
2	GASKET, SEAL	1 PER SECT.	IFG5500	V18980 #	
3	GLASS, REFLEX	1 PER SECT.	BOROSILICATE	V16757 #	
4	GASKET, CUSHION	1 PER SECT.	IFG5500	V18980 #	
5	COVER	1 PER SECT.	CARBON STEEL	V22505 # A11	ASME SA36
6	BOLT	SEE CHART	CARBON STEEL	X172479	B18.2.1
7	WASHER	2	304SS	V13936 R	
8	TAG, RATING	1	304SS	V21864	

BILL OF MATERIAL (ALL 316SS)					
NO.	NAME OF PART	QTY.	MATERIAL	PART NO.	SPECIFICATION
1	CHAMBER, WELD PAD	1	316/316LSS	V3 ## #.### TL2	ASTM A276 & ASME SA479
2	GASKET, SEAL	1 PER SECT.	IFG5500	V18980 #	
3	GLASS, REFLEX	1 PER SECT.	BOROSILICATE	V16757 #	
8	GASKET, CUSHION	1 PER SECT.	IFG5500	V18980 #	
4	COVER	1 PER SECT.	316/316LSS	V22505 # TL10	ASME SA479
5	BOLT	SEE CHART	316SS	X172603	B18.2.1
6	WASHER	2	304SS	V13936 R	
7	TAG, RATING	1	304SS	V21864	

- NOTES:
1. DIMENSIONS IN INCHES W/ mm EQUIVALENTS IN BRACKETS.
 2. REFER TO THE FOLLOWING (FOR):
 - CATALOG BULLETIN J100.37 (FULL RATINGS & ADDITIONAL INFORMATION).
 - IOM BULLETIN J500.11 (INSTRUCTIONS).
 - SEE PRICE SHEET BULLETINS FOR AVAILABLE OPTIONS.
 3. "#" IN PART NUMBER INDICATES SIZE, NUMBER OF SECTIONS, AND RADIUS SIZE.
 4. CONSULT FACTORY FOR ALTERNATE MATERIAL OPTIONS.

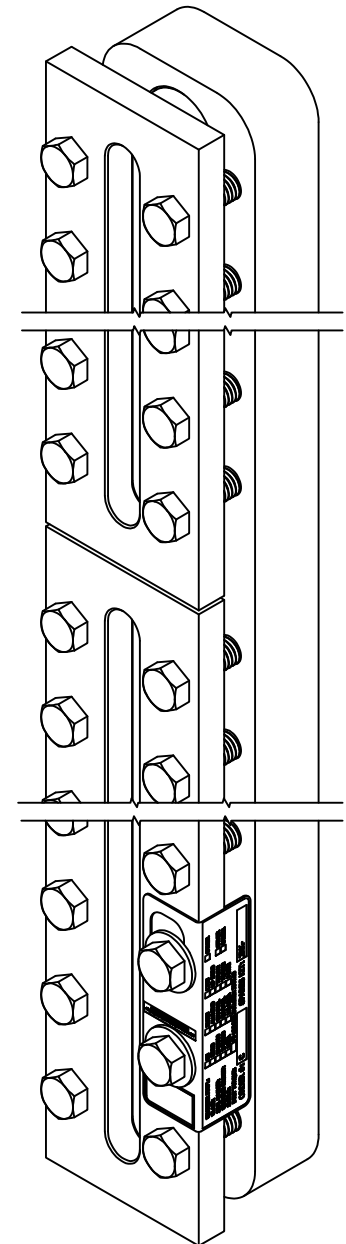
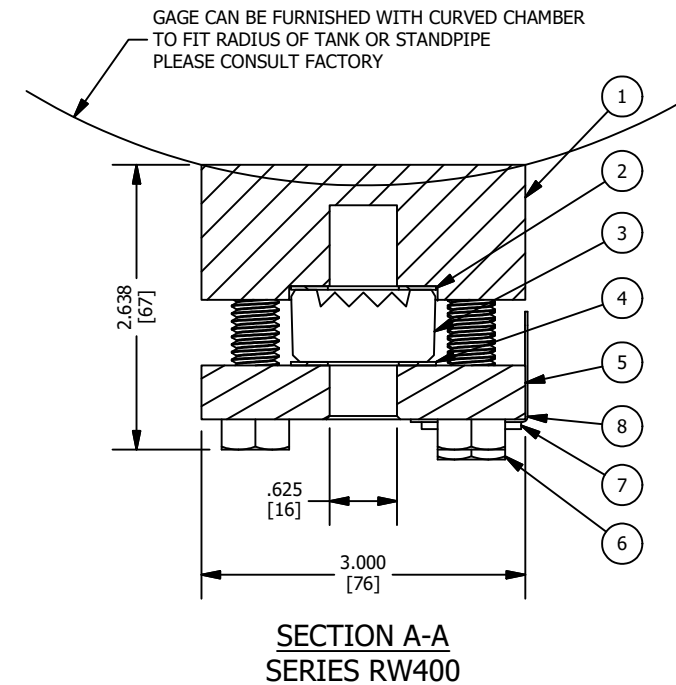
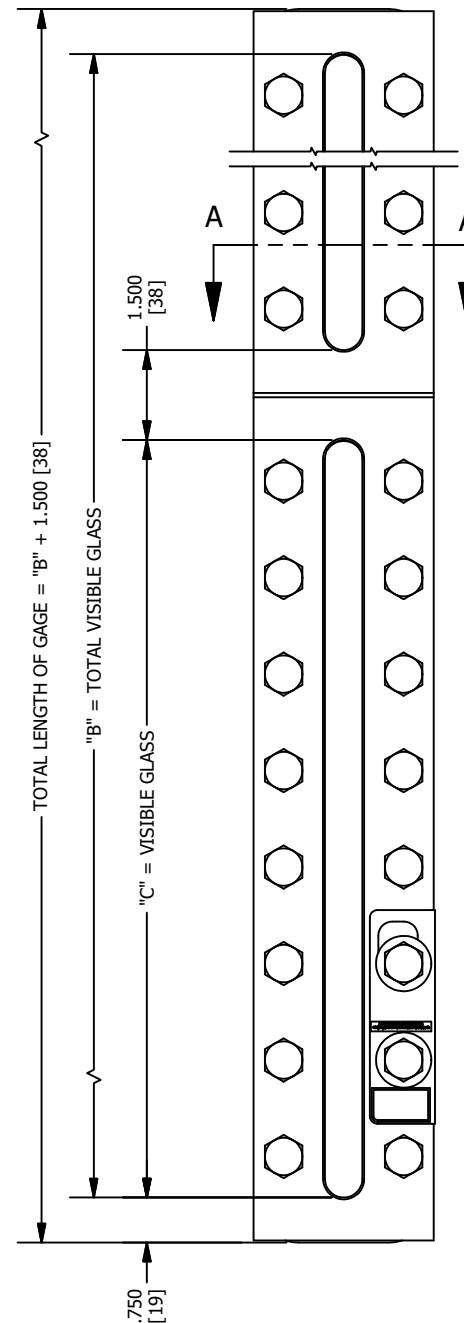
TEMPERATURE/ PRESSURE RATING:

CARBON STEEL: MIN TEMPERATURE -20°F (-29°C), MIN PRESSURE 0 PSI (0 Kg/cm²)

MAX TEMPERATURE 400°F (204°C), MAX PRESSURE 400 PSI (28 Kg/cm²)

STAINLESS STEEL: MIN TEMPERATURE -320°F (-195°C), MIN PRESSURE 0 PSI (0 Kg/cm²)

MAX TEMPERATURE 400°F (204°C), MAX PRESSURE 400 PSI (28 Kg/cm²)



SIZE NO.	QTY. PER SECT.	BOLTS	DIM. "C"	NUMBER OF SECTIONS			
				DIMENSION "B"			
				1	2	3	4
1	6	6	3.750 [95]	3.750 [95]	9.000 [229]	14.250 [362]	19.500 [495]
2	6	6	4.750 [121]	4.750 [121]	11.000 [279]	17.250 [438]	23.500 [597]
3	8	8	5.750 [146]	5.750 [146]	13.000 [330]	20.250 [514]	27.500 [699]
4	10	10	6.750 [171]	6.750 [171]	15.000 [381]	23.250 [591]	31.500 [800]
5	10	10	7.875 [200]	7.875 [200]	17.250 [438]	26.625 [676]	36.000 [914]
6	12	12	9.125 [232]	9.125 [232]	19.750 [502]	30.375 [772]	41.000 [1041]
7	14	14	10.250 [260]	10.250 [260]	22.000 [559]	33.750 [857]	45.500 [1156]
8	16	16	11.875 [302]	11.875 [302]	25.250 [641]	38.625 [981]	52.000 [1321]
9	16	16	12.625 [321]	12.625 [321]	26.750 [679]	40.875 [1038]	55.000 [1397]

REV	DATE	REVISION	BY
7	05/13/2021	UPDATED BOLT IN ALL 316SS MATERIAL BOM	SH
6	02/16/2021	UPDATED TITLE BLOCK, ADDED DUAL UNITS TO P/T RATINGS	CMN
5	12/17/2020	UPDATED CHAMBER PART NUMBERS FROM V22639 ## ### TO V3 ## #.### ##	SH
4	06/02/2020	UPDATED BALLOONS IN SECTION A-A	SH
3	05/19/2020	ADDED TEMPERATURE / PRESSURE RATINGS	SH
2	04/03/2020	UPDATED SPECIFICATION FOR 316SS CHAMBERS, ADDED TOTAL LENGTH DIMENSION	SH

<p>MANUFACTURED BY</p> <p>Clark-Reliance®</p> <p>16633 FOLTZ PARKWAY STRONGSVILLE, OH 44149 USA (440) 572-1500 www.clarkreliance.com © Clark-Reliance® Corporation. All Rights Reserved.</p>	<p>SERIES RW400 WELD PAD GAGE</p> <p>JERGUSON®</p>	<p>DRAWING NO.:</p> <p>RW400</p>	<p>REV.:</p> <p>7</p>
		<p>DRAWN: SH</p> <p>CHECKED: SRM</p> <p>DATE: 07/23/2019</p> <p>REV: 7 CDC 21-186: SH: 5/13/2021</p>	<p>TOLERANCES (U.O.N.):</p> <p>C/C Dimensions: ±.125"</p> <p>Dimension Spanning Welded Parts: ±.125"</p> <p>Angles: ±1°</p> <p>(See PES-004 for details)</p>