

RFQ and Purchase Order Specification Work Sheets

Section: R406.006
Date: 11-1-2011
Supersedes: NEW
Page 1

P4000 Series Simpliports

DIMENSION CHART -- STANDARD SIZES												TO BE SPECIFIED BY CUSTOMER			BILL OF MATERIAL							
SIMPLIPORT WINDOW PART NO.	NO. OF UNITS	VISION A				BODY D				F (INO)				SIMPLIPORT PART NO.	B	F'	ITEM	PART NO.	QTY	DESCRIPTION	MATERIAL	DWG. NO.
		INCHES	MM	INCHES	MM	INCHES	MM	INCHES	MM	INCHES	MM	INCHES	MM									
P4005	5	10 1/4	(260)	17 3/4	(450)	21	(530)	11 7/8	(300)	12 3/4	(320)	10 3/16	(260)	10 3/8	(260)	11 9/16	(290)	1	PACKING NUT ASSEMBLY	STN. STL.	PS1483-A	
P4006	6	12 5/8	(320)	20 1/8	(510)	23	(580)	14 1/4	(360)	15 1/8	(390)	11 3/8	(290)	11 9/16	(290)	12 1/2	(315)	2	WASHER	PHN	C-9184	
P4007	7	15	(380)	22 1/2	(570)	25	(630)	16 3/8	(410)	17 1/2	(440)	12 9/16	(315)	12 3/4	(320)	13 1/2	(340)	2	WASHER	PHN	C-9184	
P4008	8	17 3/8	(440)	24 7/8	(630)	28	(710)	19	(480)	19 7/8	(500)	13 3/4	(340)	13 1/2	(340)	14 1/2	(360)	2	WASHER	PHN	C-9184	
P4009	9	19 3/4	(500)	27 1/4	(690)	30	(770)	21 3/8	(540)	22 1/4	(560)	15 1/16	(380)	15 1/4	(380)	16 1/2	(410)	2	WASHER	PHN	C-9184	
P4010	10	22 1/8	(560)	29 3/8	(750)	32	(810)	23 3/4	(600)	24 5/8	(620)	16 1/8	(410)	16 3/16	(410)	17 1/2	(390)	2	WASHER	PHN	C-9184	

FIGURE A
FOR NIPPLE CONNECTION (1500 PSI MAX)
(10345 KPa MAXIMUM)
DESIGN TEMPERATURE: 550°F.
312.8° C.

SCREWED FOR 0-900 WSP
WELDED FOR 901-1500 WSP

SECTION A-A
EXPLODED VIEW OF SINGLE WINDOW UNIT

NOTES:
 -- ITEMS 1 TO COMPLETE PART NO. AND NO. OF WINDOW UNITS
 -- ITEMS 2 THRU 10 FORM ONE COMPLETE ASSEMBLY OF SINGLE WINDOW UNIT
 -- ITEMS 2 THRU 7 COMPRISE A REPLACEMENT PACKAGE INCLUDING THE MODULE, TO BE ORDERED AS PART NO. PW-873 (SEE EXPLODED VIEW)
 -- ITEMS 8 THRU 10 COMPRISE A PACKING NUT ASSEMBLY, TO BE ORDERED AS PART NO. PN-68 (SEE EXPLODED VIEW)
 -- ASSEMBLY OF ILLUMINATOR & HOOD ON GAGE REF. DWG. A9-14916

ITEM	PART NO.	QTY	DESC.
1	PN-68	1	PACKING NUT ASSEMBLY
2	PW-873	1	REPLACEMENT PACKAGE
3	PW-873	1	REPLACEMENT PACKAGE
4	PW-873	1	REPLACEMENT PACKAGE
5	PW-873	1	REPLACEMENT PACKAGE
6	PW-873	1	REPLACEMENT PACKAGE
7	PW-873	1	REPLACEMENT PACKAGE
8	PN-68	1	PACKING NUT ASSEMBLY
9	PN-68	1	PACKING NUT ASSEMBLY
10	PN-68	1	PACKING NUT ASSEMBLY

ITEM	PART NO.	QTY	DESC.
1	PN-68	1	PACKING NUT ASSEMBLY
2	PW-873	1	REPLACEMENT PACKAGE
3	PW-873	1	REPLACEMENT PACKAGE
4	PW-873	1	REPLACEMENT PACKAGE
5	PW-873	1	REPLACEMENT PACKAGE
6	PW-873	1	REPLACEMENT PACKAGE
7	PW-873	1	REPLACEMENT PACKAGE
8	PN-68	1	PACKING NUT ASSEMBLY
9	PN-68	1	PACKING NUT ASSEMBLY
10	PN-68	1	PACKING NUT ASSEMBLY

PATENT NO. 3,187,573
HYDROTEST AT 2200 PSI (151.7 MPa)

DIMENSIONS IN INCHES
DIMENSIONS IN () MILLIMETERS

CLARK-RELIANCE CO.
STRONGVILLE, OHIO, U.S.A.

SIMPLIPORT 4000 SERIES GAGE ASS'Y
0-1500 WSP

REV.	DESCRIPTION	DATE	SIG.

UNLESS OTHERWISE NOTED:
 TOLERANCES ON:
 DIMENSIONS OF:
 FIN. FRACTIONAL (UP TO 1") (INCL.) (.001)
 FIN. FRACTIONAL (1" INCL. UP TO 1 1/2") (.001)
 FIN. FRACTIONAL (1 1/2" UP TO 2") (.001)
 FIN. FRACTIONAL (2" UP TO 3") (.001)
 FIN. FRACTIONAL (3" UP TO 4") (.001)
 FIN. FRACTIONAL (4" UP TO 6") (.001)
 FIN. FRACTIONAL (6" UP TO 12") (.001)
 FIN. FRACTIONAL (12" & OVER) (.001)
 ANGLES:
 UNLESS OTHERWISE NOTED, ALL ANGLES ARE TO BE SHOWN AS SHOWN ON DRAWING

MATERIAL:
SEE INDIVIDUAL PART DRAWINGS

DRAWN: MJS
CHKD: JST
DATE: 10/22/07

SCALE: NONE

DRAWING NO.: PS1483-A
REV.:

Please complete all information fields in this worksheet and submit with your RFQ (Request For Quote) or Purchase Order. The use of these worksheets has proven to greatly decrease Engineering time and virtually eliminate specification errors.



16633 Foltz Parkway • Strongsville, OH USA • Phone: (440) 572-1500 • Fax: (440) 238-8828
www.clark-reliance.com • sales@clark-reliance.com

**Must accompany P.O with all fields
 completed**

Customer: _____
 Address: _____
 Contact Name: _____
 Phone No.: _____
 E-mail: _____

Date: _____
 P.O. No.: _____
 Quote Ref.: _____
 On Site Req'd.: _____
 Other Info.: _____

REQUIRED INFORMATION

Design Pressure: _____
 Design Temperature: _____
 Visibility Required: _____
 Model No.: _____

Water Gage Valve Connection: $\frac{3}{4}$ " O.D. Nipple is standard
 Special Side Flange Specification: When required $\frac{1}{2}$ "-2500 RTJ Flange is standard

Flange Size: _____
 Flange Class: _____
 Flange Face: _____

P4000 Series: Dimension Chart-Standard Size 0-1500 PSI (103 Bar)

Simpliport Model No.	# of Ports	Vision A inches (mm)	Min. Centers B inches (mm)	Body D inches (mm)	Min. F inches (mm)
P4005	5	10.25 (260)	21.00 (533)	11.88 (301)	10.38 (263)
P4006	6	12.62 (320)	23.37 (593)	14.25 (362)	11.56 (294)
P4007	7	15.00 (380)	25.75 (654)	16.62 (422)	12.75 (324)
P4008	8	17.38 (441)	28.12 (714)	19.00 (482)	13.94 (354)
P4009	9	19.75 (501)	30.50 (774)	21.38 (543)	15.25 (387)
P4010	10	22.12 (562)	32.88 (835)	23.75 (603)	16.31 (414)

P4000 Series: Multi-Section Sizes 0-1500 PSI (103 Bar)

P4011	11	25.50 (650)	36.25 (920)	27.12 (688)	18.00 (457)
P4012	12	27.88 (708)	38.62 (980)	29.50 (749)	19.19 (487)
P4013	13	30.25 (768)	41.00 (1041)	31.88 (809)	20.38 (517)
P4014	14	32.62 (828)	43.38 (1101)	34.25 (869)	21.56 (547)
P4015	15	35.00 (885)	45.75 (1162)	36.62 (930)	22.75 (577)
P4016	16	37.38 (949)	48.12 (1222)	39.00 (990)	23.94 (608)
P4017	17	39.75 (1009)	50.50 (1282)	41.38 (1051)	25.12 (638)
P4018	18	42.12 (1069)	52.88 (1343)	43.75 (1111)	26.31 (668)
P4019	19	44.50 (1130)	55.25 (1403)	46.12 (1171)	27.50 (698)
P4020	20	46.88 (1190)	57.62 (1463)	48.50 (1231)	28.69 (728)
P4021	21	50.12 (1273)	61.00 (1549)	51.88 (1317)	30.13 (765)
P4022	22	52.62 (1336)	63.38 (1609)	54.25 (1377)	31.56 (801)
P4023	23	55.00 (1397)	65.75 (1670)	56.62 (1438)	32.75 (831)
P4024	24	57.38 (1457)	68.12 (1730)	59.00 (1498)	33.94 (862)
P4025	25	59.75 (1517)	70.50 (1790)	61.38 (1559)	35.12 (892)
P4026	26	62.12 (1577)	72.88 (1851)	63.75 (1619)	36.31 (922)
P4027	27	64.50 (1638)	75.25 (1911)	66.12 (1679)	37.50 (952)
P4028	28	66.88 (1698)	77.62 (1971)	68.50 (1739)	38.68 (982)
P4029	29	69.25 (1758)	80.00 (2032)	70.88 (1800)	39.88 (1012)
P4030	30	71.62 (1819)	82.38 (2092)	73.25 (1860)	41.06 (1043)

ILLUMINATION REQUIREMENTS

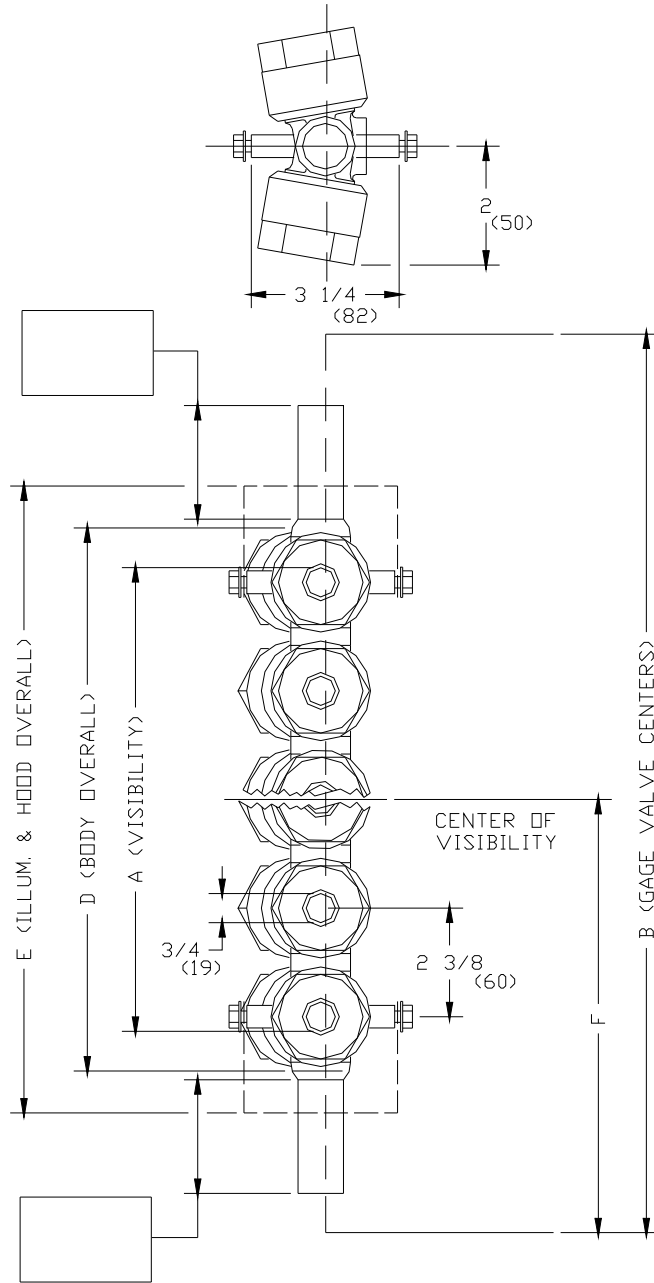
Power Requirements: 120 VAC 240 VAC
 Area Classification: Ordinary (non-hazardous)
 Hazardous – Specify: _____

Simpliport 180 Wide Angle LED Illumination
 Simpliport LED Illumination (Hazardous Areas – 120 VAC)
 Simpliport LED Illumination (Hazardous Areas – 240 VAC)
 Optional Mirrors (specify) _____

Note: Minimum Centers "B" are for Steel Water Gage Valves. See Bulletin ABS, 1D for information on water gage valves.

Note to Specifier: The three most important dimensions are A, B and F. (D is a constant.) Ask for a complete Reliance Engineered Product Specification Guide.

Note: Section I of the ASME Code requires that ported type gages must be fitted with proper illumination to provide visual discrimination between water and steam.



Note: Consult factory if smaller minimum centers, non-standard flanges or other special items are required

Additional notes:
